



TOUGH TRAC™

PITCH ROOF SYSTEM 2012



Photo: Courtesy of www.mariahandadam.com

TOUGH TRAC™

The TOUGH TRAC solution for mounting on Pitch Roofs is based on a water tight design. A stock flashing plate is included for a watertight installation.

Our Pitch Roof solution is a 100% all aluminum design that prevents corrosion for years to come. Combined with adjustable Slide Mounts, Height/Align Adjusters, and one piece Flashing Plate, installations are simple, easy, and quick to install.

Worrying about flashing and preventing leaks through all the penetrations on the roof, no problem. The standard one piece Flashing Plate features an 11" x 10" aluminum base plate which provides and solves the flashing requirements needed for a water tight installation.

In addition, with the new Height/Align Adjuster, correcting issues with uneven rafters and correcting unaligned drilled holes is an easy fix. Our height adjuster has the ability to adjust up to 1 1/2" in height, and the ability to correct unaligned drilled holes of up to 1".



FACTORY PRODUCTION FACILITIES: Made in the USA & China

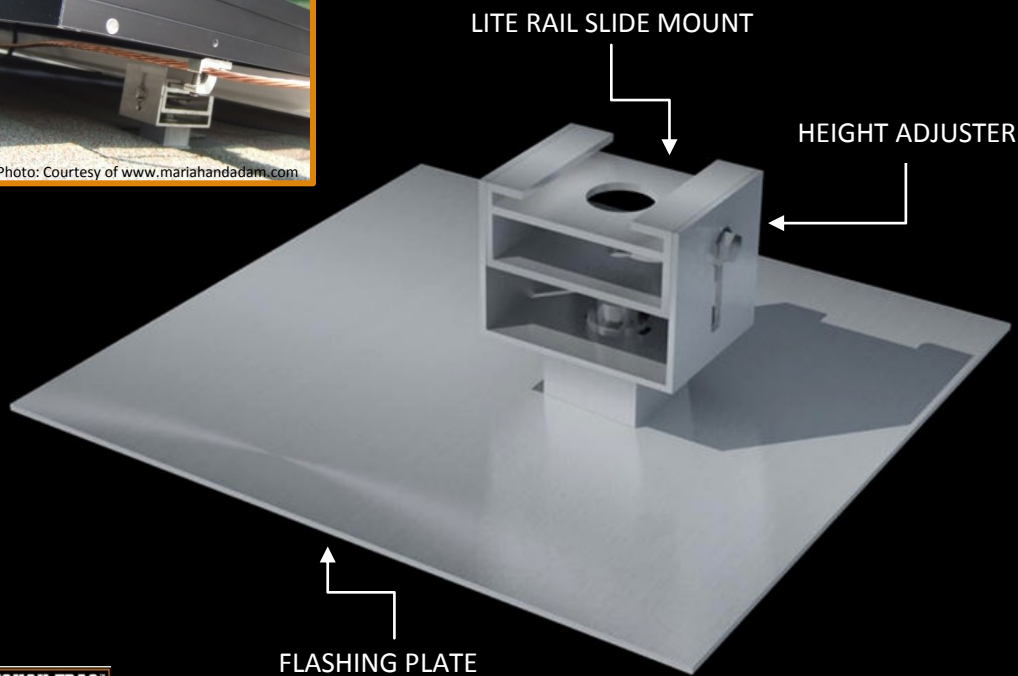
VISIT US ONLINE AT WWW.TOUGHTRAC.COM

©COPYRIGHT 2009 TOUGH TRAC™. TRADEMARK BELONGS TO THEIR RESPECTIVE OWNERS. ALL RIGHTS RESERVED.





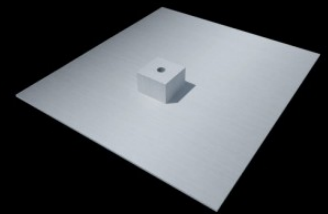
Photo: Courtesy of www.mariahandadam.com



TOUGH TRAC

TOUGH TRAC™

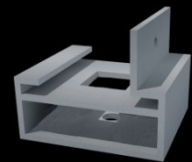
PITCH ROOF SET PARTS



FLASHING PLATE



HEIGHT ADJUSTER



STD RAIL SLIDE MOUNT



STD RAIL CONNECTOR TUBE



LITE RAIL
CONNECTOR
CHANNEL

Standard Pitch Roof Lite Rail comprises the following parts:

- 11" x10" Flashing Plates
- Height Adjusters
- Lite Rail Slide Mounts
- Lite Rail
- Lite Rail Connector Channels
- Top Mount End Clamps
- Top Mount Mid Clamps
- Large & Small Rail Stainless Steel Bolts/Washers/Nuts
- T Bolts Rail Stainless Steel Bolts/Washers/Nuts
- 1/4" x 4" Stainless Steel Bolts/Washers/Nuts
- 1/4" x 1.5" Stainless Steel Bolts/Washers/Nuts
- Set Screws #14 x 1" Stainless



RAIL BOLTS



STANDARD RAIL



LITE RAIL



TOP MID & END CLAMPS



FACTORY PRODUCTION FACILITIES: Made in the USA & China

VISIT US ONLINE AT WWW.TOUGHTRAC.COM

©COPYRIGHT 2009 TOUGH TRAC™. TRADEMARK BELONGS TO THEIR RESPECTIVE OWNERS. ALL RIGHTS RESERVED.





TOUGH TRAC

Photo: Courtesy of www.mariahandadam.com

Component Specifications

Aluminum Rail & Parts: 6061 Aluminum China & 6005 Aluminum USA

Hardware Parts: 300 & 400 Series Stainless Steel

Flashing Plate: 6061 Anodized Aluminum

Code Compliant

PE Certified
TUV Tested
ISO Certified

Warranty

20 Years Limited Warranty

Technical Support

Installation Manual & Videos
Layout Design & Bill of Materials Calculated

Key Benefits:

- Lowest Priced MSRP in the market.
- Simple Installation and Ordering.
- Designed to mount any size panel.
- Designed with solid aluminum 11" x 10" Flashing Plate. Strongest in the market.
- Height Adjuster corrects uneven rafters and unaligned drilled holes.
- Best in class spans for Lite Rail & Standard Rail.
- Lite Rail spans up to 64" for 90mph wind zones.
- Standard rail spans up to 96" for 120mph wind zones
- 100% all Aluminum Components and Stainless Steel Hardware.
- 20 Year Limited Warranty.
- Available with Anodized and Powder Coat Finishes.



FACTORY PRODUCTION FACILITIES: Made in the USA & China

VISIT US ONLINE AT WWW.TOUGHTRAC.COM

©COPYRIGHT 2009 TOUGH TRAC™. TRADEMARK BELONGS TO THEIR RESPECTIVE OWNERS. ALL RIGHTS RESERVED.

